

Lyphazome® Technology

U.S. Patent No. 5,879,703 • U.S. Patent No. 5,269,979 • U.S. App. No. 60/755,171

"Dial A Size" on demand

Range 5 nm-1000 nm

Rapid release

Sustained release

Ease of manufacturing

Pre-load

In-situ

Concurrent combinations

Protects ingredients from degradation

Flexibility of product formats

liquids

gels

emulsions

powders

sprays

Stable pH range, 3.0 to 8.0

High passenger loading capacity

Non-precipitating

Ability to create up to 85% nano-concentration within product

PHASE I:

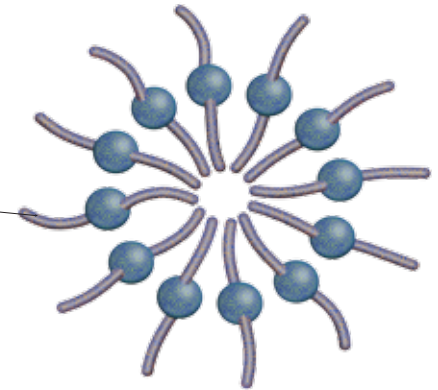
NLP (Nano-Lipid Particles) Assemblies

Key:

(▲ Orange) - Lipophilic Ingredients

(▲ Green) - Hydrophilic Ingredients

All-natural Phospholipid Chain

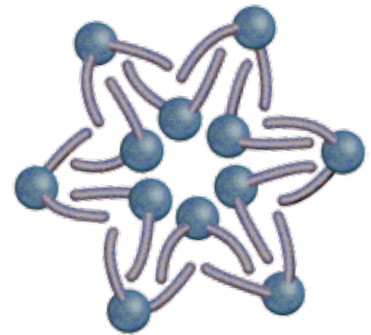


PHASE II:

Cross-Section of Nanosphere

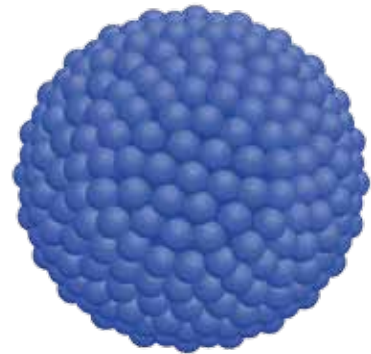
- At 60-150 nanometers
Optimally clear preparations are possible.

- Size Ranges from 5 - 1000 nms.



PHASE III:

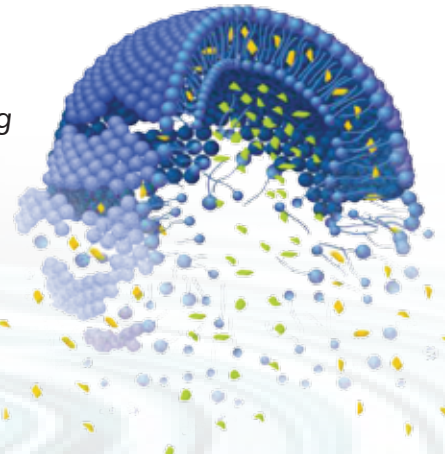
Completely Formed - NLP Nanosphere



PHASE IV:

Slowly Releasing - NLP Nanosphere

Through natural occurring changes within the skin, microspheres break apart and slowly release ingredients.



dermaCM
FDA Registered Contract Manufacturer